

industria5™

This new three hundred and eighty thousand square foot facility houses a distribution and testing center and is headquartered in Fort Worth, Texas. It was only fitting for such a state-of-the-art facility to be illuminated with equivalently state-of-the-art luminaires. Day-Brite Lighting's Industria5, a T5 fluorescent high bay, was selected because of its high quality performance and significant energy savings. A wonderful new facility with Industria5 luminaires lighting all of the industrial and warehousing spaces, and they are saving thousands of dollars worth of electricity annually.

Day-Brite Lighting's Industria5 fluorescent high bay technology was selected since it offered about 50% energy savings when compared to traditional HID high bay systems. In addition, by coupling on/off capabilities through motion sensors to 60% of the fixtures, the electricity bill would be reduced from an estimated \$92,000 annual bill to \$22,000 based on twelve to fourteen hour a day operations, five days a week.

By adding the energy management feature of motion sensors and allowing the fluorescent systems to turn off during the unoccupied period, this facility quickly obtained a good return on their investment.

An efficient alternative in industrial lighting applications, the FTV Fluorescent High Bay Luminaire features Miro4 or full specular 2.5" deep parabolic reflectors and a vented enclosure design providing:

- Improved Quality of light (CRI>80) with highest maintained efficacy.
- 50% Less energy consumed for equivalent light levels and equal number of luminaires compared to standard high bay HID systems.
- Improved vertical uniformity due to thermally and optically superior lighting control.

"Before settling with the Day-Brite Industria5, fluorescent high bay as our recommendation, we performed several on-site evaluations where it was concluded that the light control from this luminaire provided enhanced visual comfort. Industria5 delivers high efficiency along with the comfort levels demanded by those working in these environments."

—Greg Thompson, Vice-President, Masters & Associates, Inc.

"We were able to reduce the number of fixtures from the original 625, down to 525 and keep uniformity with twenty-six by twenty-six foot spacing. Since the overall ceiling height approximated thirty feet and the efficiency of the Industria5 allowed for more light being directed back into the warehouse space, we feel that our design work coupled with the Day-Brite technology offered this facility a state-of-the-art solution to their warehouse operations"

Greg Thompson

—Greg Thompson, Vice-President,
Masters & Associates, Dallas, TX



A Study In...

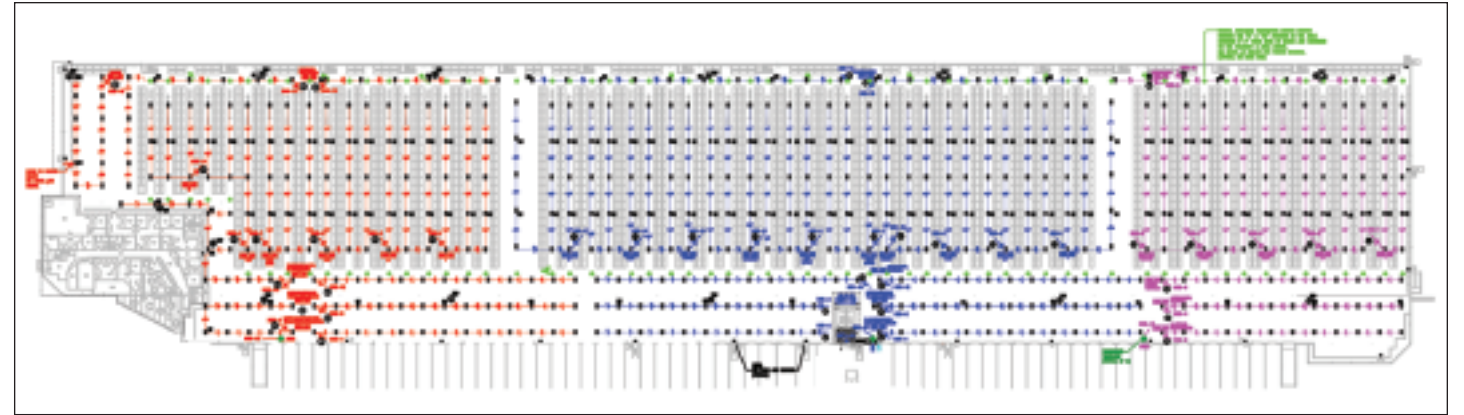
Warehouse Lighting



indus tra

 Day-Brite® Lighting

The three hundred-eighty thousand square foot manufacturing facility constructed in 2003 includes a testing and molding area, a full storage warehouse, and a thirty thousand square foot office. In the warehouse, ceiling heights approximate thirty feet throughout the space, allowing for fixture spacing up to twenty-six feet to maintain uniformity at a workplane height of 2.5 feet. The lighting was designed to maintain thirty footcandles throughout the open areas where additional circulation is expected and twenty footcandles in the rest of the aisle areas.



INVOLVED PARTIES...

Local Distributor: **Mustang Electric Supply**
Lighting Designer: **Masters and Associates, Dallas, TX**
Installing Electrical Contractor: **Masters and Associates, Dallas, TX**
Day-Brite Lighting Sales Rep: **Ron Stafford, Architectural Lighting Associates**

Masters and Associates was founded in March 1993 and engages in electrical contracting for major commercial, institutional and industrial projects. Their goal is the performance of quality work at competitive prices, while successfully meeting the demands of complex construction schedules.

With all of the project management procedures that Masters and Associates, Inc. applies to each project it undertakes, construction ceases to be difficult. Schedules, even demanding ones, become attainable and close-out is concise, correct, and complete.

 **Day-Brite® Lighting**
a Genlyte company

776 South Green Street • Tupelo, MS 38804
Phone: 662-842-7212 • Fax: 662-841-5501 • www.daybritelighting.com

Form Number: **627.1004.IMEC.5M**